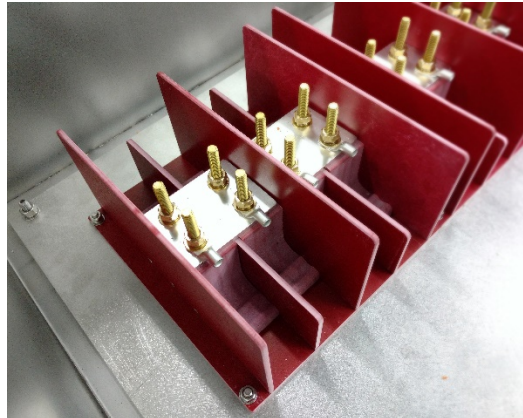


MV Terminal

6.6kV

Abtech's medium voltage terminal is a component certified device that simplifies the connection of 4.4 to 6.6kV electrical supplies. It can be used with any ATEX or IECEx Zone 1 certified enclosure.



- Available in three, four and six way configurations
- Can be linked in pairs or multiples
- Suitable for high ambient temperature applications

Terminal Data

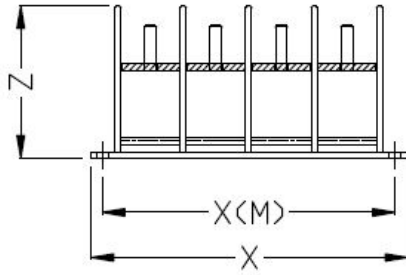
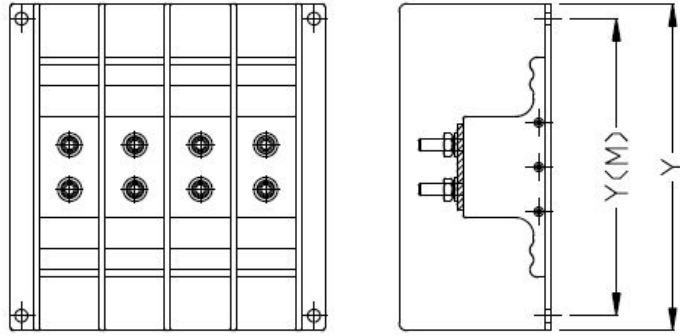
Product Reference	Width (mm)		Height (mm)		Depth Z (mm)	Maximum Voltage (kV)*	Maximum Current (A)	Maximum Conductor Size (mm ²)	Maximum Ways	Weight (kg)
	X	X(M)	Y	Y(M)						
TATEMV3	168	153	220	200	102	4.4	250	240	3	1.8
TATEMV4	212	197	220	200	102	4.4	250	240	4	2.4
TATEMV6	300	285	220	200	102	4.4	250	240	6	3.7
TATEMV3T	168	153	220	200	114	6.6	250	240	3	1.8
TATEMV4T	212	197	220	200	114	6.6	250	240	4	2.4
TATEMV6T	300	285	220	200	114	6.6	250	240	6	3.7

*dependant on conductor size and lug configuration

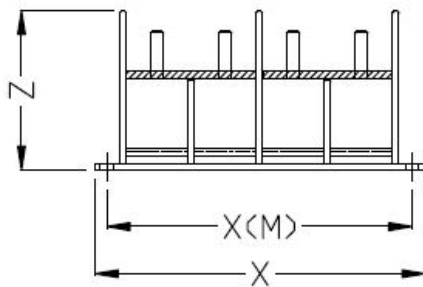
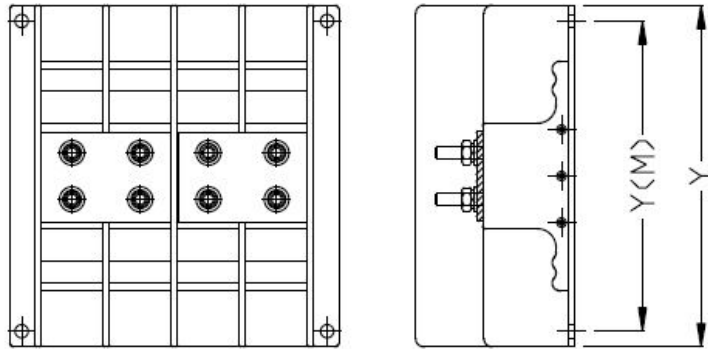
Standard Specifications

Product Type	Medium Voltage Terminal
Material	Plastic UTR Laminate GP03 grade 1494
Operating Temp Rating	-40°C to +130°C
Crimp Lugs	M8 single hole, sizes 1.5mm ² up to 240mm ²
Mounting	4 x M8 clearance holes
Certification	
Area Classification	Zone 1 & 21, Gas and Dust
Type of Protection	Ex e (Increased Safety)
Apparatus Coding	Ex e IIC Gb
Certificate Number	ATEX: CML 15ATEX3096U / IECEx: CML 15.0051U

**MV Terminal
without links
TATEMV4**



**MV Terminal with
links
TATEMV4L22**



Options

Lxx	<p>Linking: 1st x = link type (pairs, triple) 2nd x = Quantity of links required</p>
-----	--

Add the required suffix to the product reference.

Example: TATEMV6TL23 – 6 way 6.6kV max terminal block linked in pairs, three links.