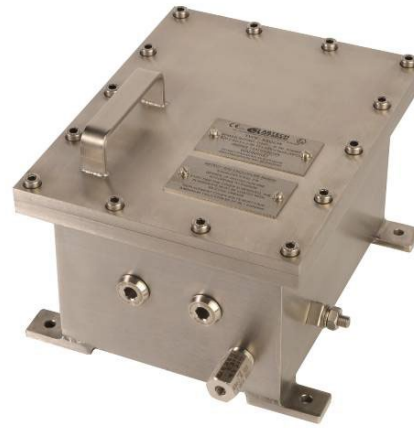


SSD Stainless Steel Enclosures

The SSD is an Ex d enclosure designed to house electrical and electronic apparatus within Zone 1 and 21 hazardous areas. Its Flameproof design allows potentially sparking equipment to be safely installed in areas where explosive gasses or dust may be present.

The use of 316L marine grade stainless steel ensures maximum environmental protection for harsh operating conditions.



IP66



Product Specification

Apparatus Type	Flameproof Enclosure Range
Ingress Protection	IP66 to EN60529
Material	316 Stainless Steel enclosure, cover & hinges complete with 316 Stainless Steel fasteners
Mounting Plate	316 Stainless Steel
Components	Switches, Breakers, RCD units, Indicator lamps, motor controllers, etc.
Voltage Rating	Up to 24kV ac or 1500V dc
Cable Entry	Variable Metric or NPT entry combinations on any of the 4 sides
Mounting	Via rear mounting lugs (see dimensional data overleaf)
Certification	
Area Classification	Group IIB Category 2 GD (Zone 1/21 and 2/22), <i>Option:</i> Group IIB+ H ₂ Category 2 GD (Zone 1/21 and 2/22)
Type of Protection	Ex db (Flameproof), Ex tb (Dust), Ex db [ia/ib] (Flameproof with Intrinsically Safe outputs)*
Apparatus Coding	Ex db IIB or IIB+H ₂ T* Gb, Ex tb* IIIC T* °C Db Ex db [ia Ga] IIB or IIB+H ₂ T6 Gb, Ex tb [ia Da] IIIC T85 °C Db Ex db [ib Gb] IIB or IIB+H ₂ T6 Gb, Ex tb [ib Db] IIIC T85 °C Db
Ambient Temperature	-20°C ≤ Tamb ≤ 40°C (with options for +45°C, +50°C, +55°C and +60°C)
Certificate Number	INERIS 13ATEX0019X / IECEx INE14.0061X

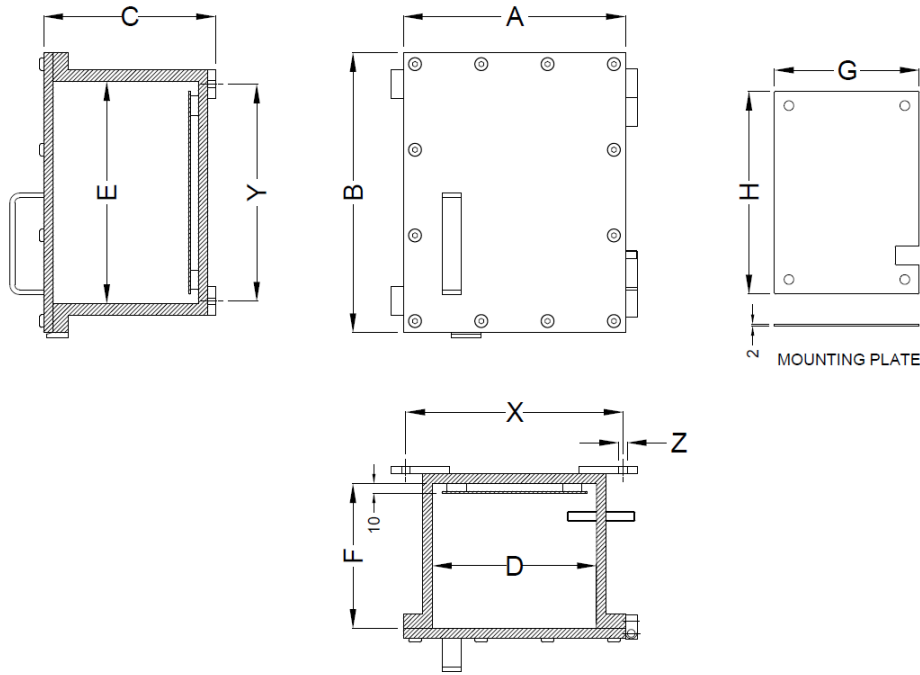
* - Type of protection and temperature class subject to inspection of internal components

Power Dissipation Ratings

SSD Model	Max Dissipated Power (W)**					
	T6 / T85°C		T5 / T100°C		T4 / T135°C & T3 / T200°C	
	Ta +40°C	Ta +60°C	Ta +40°C	Ta +60°C	Ta +40°C	Ta +60°C
SSD113	18	12	25	16	50	27
SSD234	42	27	58	38	94	61
SSD434-A	68	44	93	60	152	99
SSD434-B	68	44	93	60	152	99
SSD435	51	33	83	54	135	88
SSD445-A	74	48	101	66	166	108
SSD445	74	48	101	66	166	108
SSD455	93	60	127	83	207	135
SSD546	112	73	152	99	249	162
SSD556-A	118	77	161	105	263	171
SSD556-B	118	77	161	105	263	171
SSD646	123	80	167	109	273	177
SSD656	152	99	207	135	338	220
SSD667	217	141	296	192	483	314
SSD768	470	306	641	417	1047	681

** - Refer to certificates for full details

Enclosure Dimensions



SSD Model	EXTERNAL Dimensions (mm)			INTERNAL Dimensions (mm)			FIXING Dimensions (mm)			Mounting Plate (mm)		Weight (kg)
	A	B	C	D	E	F	X	Y	Z	G	H	
SSD113	150	180	106	100	130	80	140	130	7	90	120	11
SSD234	230	290	178	170	230	150	225	225	9	150	210	23
SSD434-A	230	400	180	170	340	150	225	335	9	150	320	30
SSD434-B	280	400	180	220	340	150	275	335	9	200	320	34
SSD435	270	460	220	210	400	190	265	395	9	190	380	42
SSD445-A	310	410	220	250	350	190	315	345	9	230	330	42
SSD445	370	450	224	310	390	190	365	385	9	290	370	61
SSD455	450	425	210	380	355	170	435	350	11	360	335	67
SSD546	340	600	244	270	530	210	325	525	11	250	510	70
SSD556-A	440	500	250	370	430	210	425	425	11	350	410	83
SSD556-B	470	560	250	400	490	210	455	485	11	380	470	88
SSD646	330	710	290	250	630	250	305	625	11	230	610	104
SSD656	420	770	297	340	690	250	395	685	13	320	670	146
SSD667	550	800	315	450	700	250	510	675	15	430	680	252
SSD768	670	1120	450	570	1020	390	650 /550	1000 /1100	15	550	1000	436

All dimensions relate to enclosure with external flange. Other sizes available on request.

Options

H2	Group IIB+ H ₂ version
RALxxxx	Paint Finish (Any RAL colour) <i>Note: Maximum paint thickness limited to 2mm for IIB and 0.2mm for IIB+H₂ areas</i>
INT	Internal Flange
W	Window options available for window fitted to cover or sides
BD	Breather Drain (Stainless Steel M20 or 1/2" NPT)

Add the required suffix to the product reference, for example SSD234RAL7001